



2016 Spring Lunch & Learn Business Intelligence

Microsoft Partner

Silver Enterprise Resource Planning
Silver Customer Relationship Management
Silver Independent Software Vendor (ISV)

Joesoftware.com



Business Intelligence

- *What is BI*
- Microsoft BI Building blocks
- Dynamics GP BI
- Dynamics CRM BI
- Successful BI project attributes

What is BI

- a set of techniques and tools for the acquisition and transformation of raw data into meaningful and useful information for [business analysis](#) purposes – Wikipedia
- simplifies information discovery and analysis, making it possible for decision-makers at all levels of an organization to more easily access, understand, analyze, collaborate, and act on information, anytime and anywhere – Microsoft

Types of BI in your business

- Personal
 - End users quick analysis in Excel
 - Exploratory analysis without IT involvement
 - Spreadsheet based output
- Team
 - Store and Share workbooks to enable collaboration
 - Shared analysis in dashboards
 - Secured access to the files
- Organizational
 - Organizational planning / budgeting / forecasting / consolidating
 - IT provides defined data views with business user roles / metrics
 - Business users create “guided analytics” experience with structured data

- Isn't BI just a fancy name for reporting?



Business Intelligence

- What is BI
- *Microsoft BI Building blocks*
- Dynamics GP BI
- Dynamics CRM BI
- Successful BI project attributes

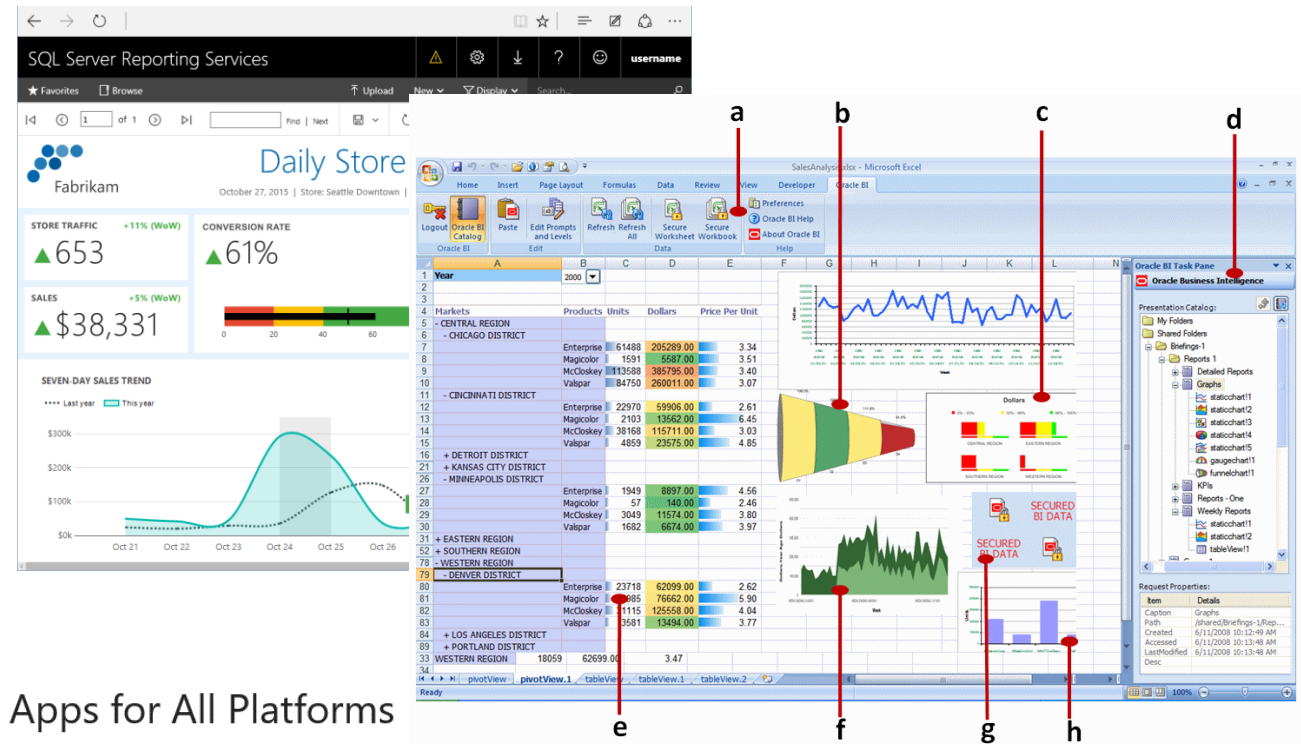
Microsoft BI Roadmap

- How do all the components fit together?
- How do they apply to my organization and my ERP?
- Where are things heading in the future?
 - Put the power of data in the hands of every business and person on the planet. Serve over a billion users with Microsoft BI platform - Microsoft



Harmonizing Report types

- Paginated Reports
 - Operational / day to day
- Interactive Reports
 - Power BI Desktop / Power View
 - Visual Data discovery
- Mobile Reports
 - Datazen
 - Mobile presentation
- Analytical Reports / Charts
 - Excel Services / Analysis



Native Apps for All Platforms



Paginated

- SSRS
- Report Writer
- Crystal Reports
- JetReports

1 of 54 100% Find | Next Select a format Export

Historical Aged Trial Balance

Company Name

Receivables Management

6/29/2012 11:35:10 AM

Customer: 11111111 Name: 11111111 Inc. Account Type: Open Item

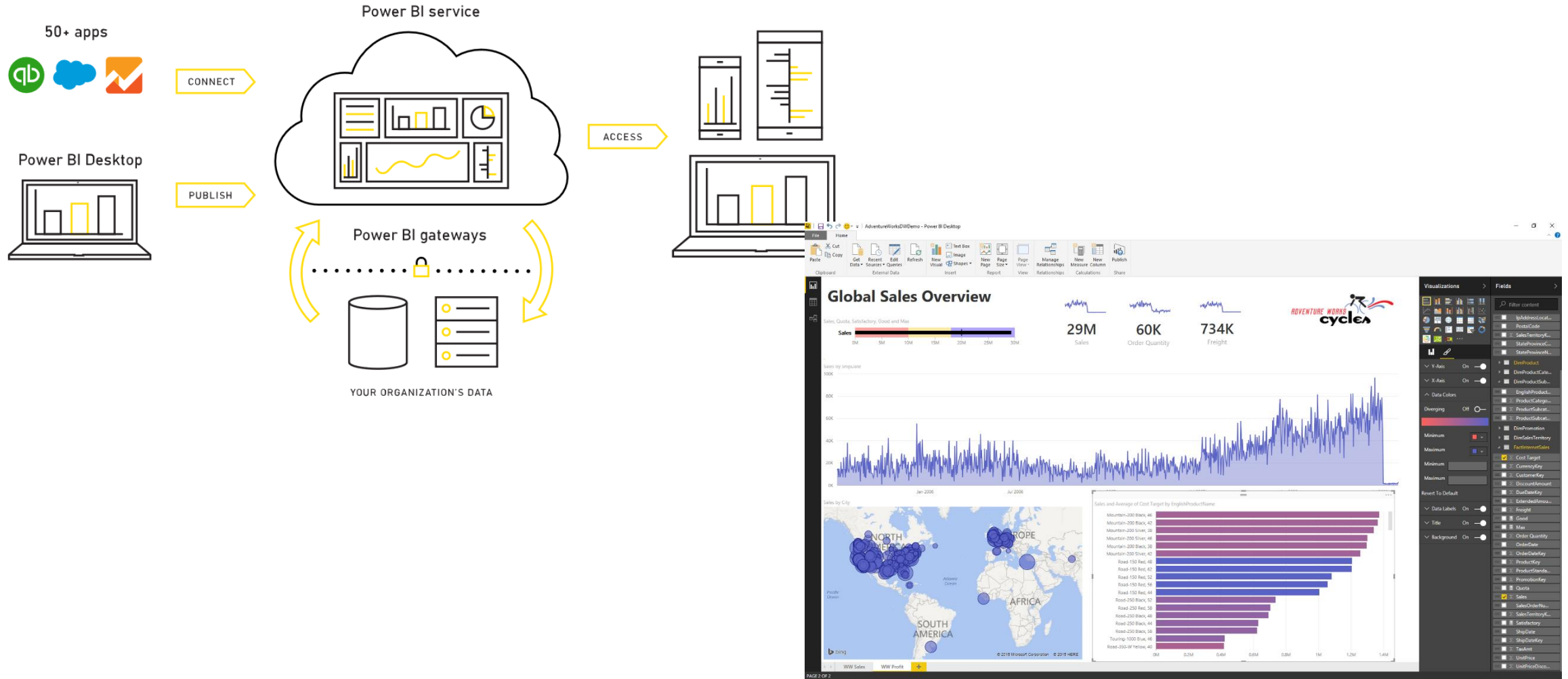
User Defined 1: Stewart (516) 297-4297 Ext. 0000 Sales Person: 750 Credit: \$15,000.00
Contact: Territory: DEFAULT
Phone: Terms: NET 30 DAYS

\$ 10,000 - REMAINS THE SAME AS PER COFANET4/3/12- Coface approved \$15,000.00, PM

Document Number	Type	Date	Amount	Note	Current	30 to 50 days	50 to 90 days	90 and over
180300	SLS	6/7/2012	\$1,989.00	CM 8921 (465.)	\$1,989.00	\$0.00	\$0.00	\$0.00
180338	SLS	6/11/2012	\$1,530.00		\$1,530.00	\$0.00	\$0.00	\$0.00
180578	SLS	6/21/2012	\$2,153.50		\$2,153.50	\$0.00	\$0.00	\$0.00
Totals:					\$5,672.50	\$0.00	\$0.00	\$0.00
					Balance			
					\$5,672.50			

Document Number	Type	Date	Amount	Note	Current	30 to 50 days	50 to 90 days	90 and over
179500	SLS	5/7/2012	\$3,460.00	P.D. 6/25 - \$5000. #2995P.D. 6/29 - \$4460. #2996	\$0.00	\$0.00	\$3,460.00	\$0.00
		72982			\$0.00	\$0.00	(\$5,000.00)	\$0.00
179690	SLS	5/14/2012	\$3,680.00		\$0.00	\$3,680.00	\$0.00	\$0.00
Totals:					\$0.00	\$9,680.00	\$4,460.00	\$0.00
					Balance			
					\$14,140.00			

Interactive Reports - Power BI Desktop

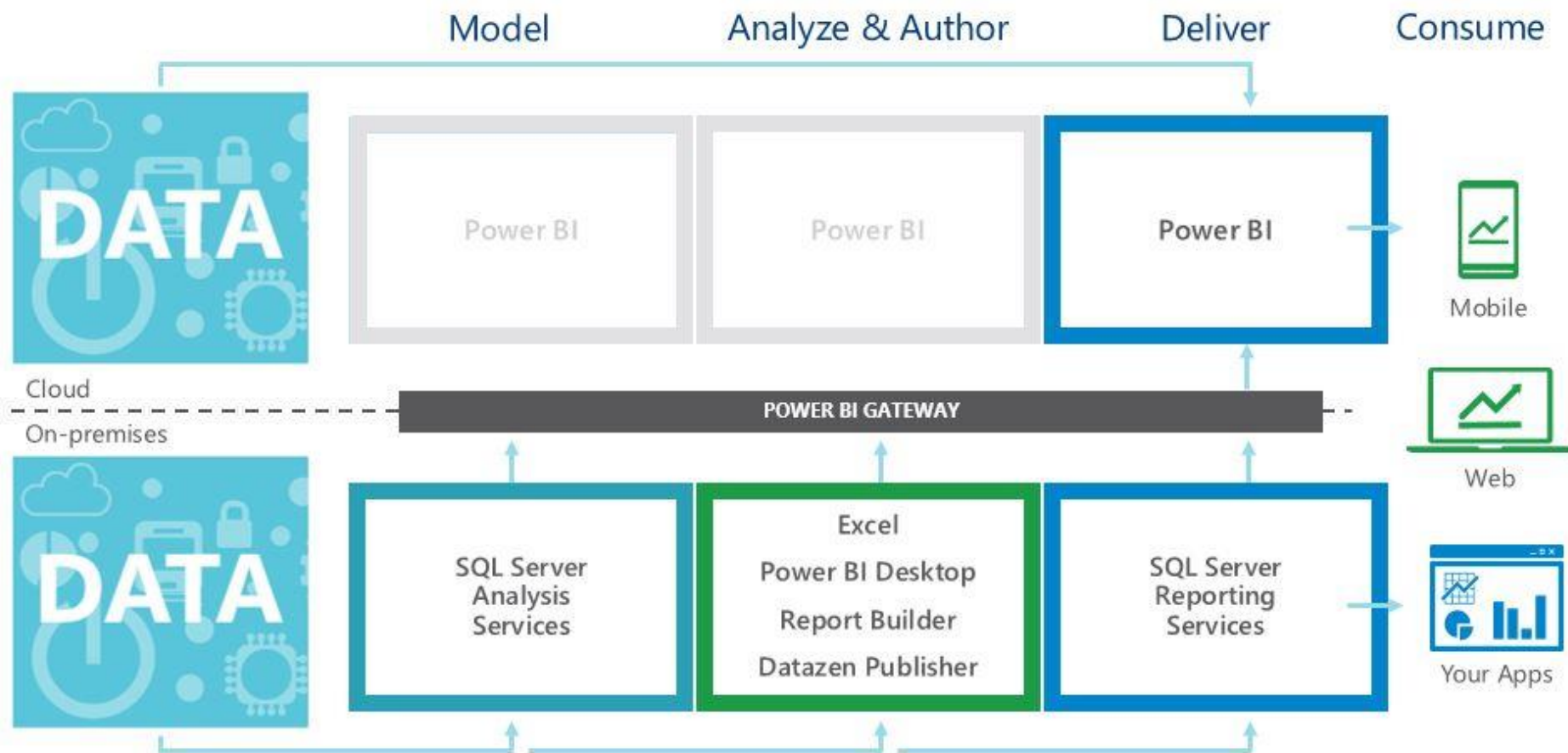


- Microsoft acquires [Datazen](#) 2015

Native Apps for All Platforms



Symmetry across on-prem and cloud



Business Intelligence

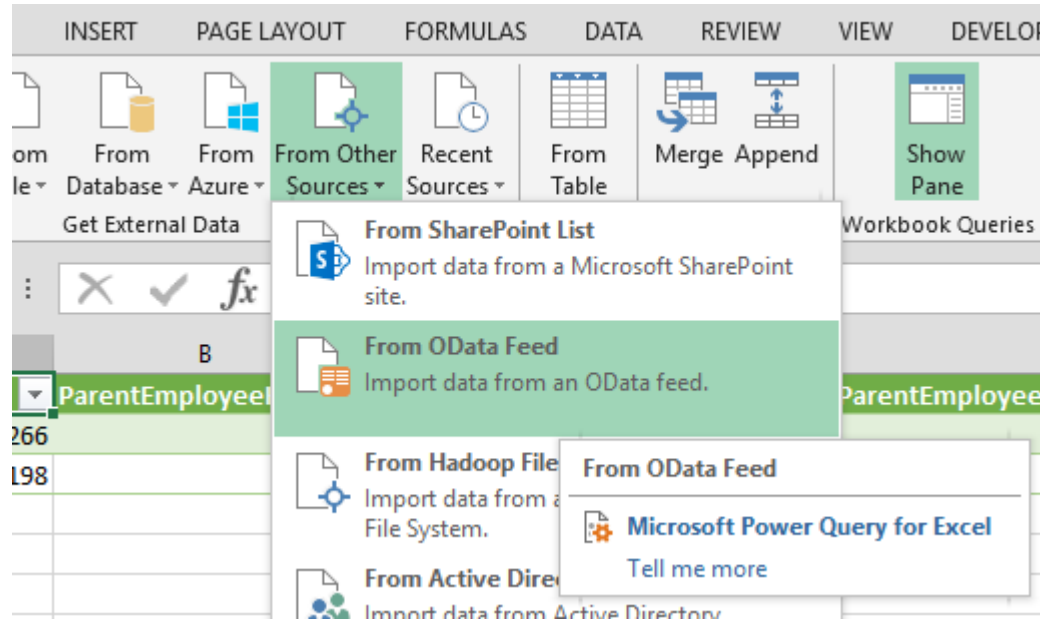
- What is BI
- Microsoft BI Building blocks
- *Dynamics GP BI*
- Dynamics CRM BI
- Successful BI project attributes

Dynamics GP

- Paginated Reports
 - Report Writer
 - SSRS
 - Legacy (e.g. Crystal)
 - JetReports (Express)
 - Management Reporter
- Interactive
 - Smartlist / Smartlist Builder
 - Excel Reports / Power Query
 - JetReports
 - Power BI Desktop
- Mobile
 - Business Analyzer
- Analytical
 - SQL Analysis Services
 - Excel Pivot Tables
 - Prophix

GP 2016 OData Support

- What is OData?
- How to use OData feeds (in Excel)



data sources

NAME	STATUS	TYPE
SQL Server		
Oracle		
SharePoint Online Document Library		
Power Query		
GuyinACube	Gateway not available	SQL Server
jburchel2012primary	Ready	SQL Server
jburchelazure	Ready	SQL Server
PowerQueryToJburchelgateway	Credentials not set	OData Feed

MR Roadmap

- MR Moving to maintenance status
- Microsoft announces Jet Express for Excel free for Dynamics GP customers (May 2016)
 - Free download (Jun 2016 from JetReports website)
 - Will include pre-built reports, tutorial videos, online community
 - Users can upgrade to Jet Essentials (across databases and companies) or Jet Enterprise (BI tool from Jet Reports)

Jet Reports

- Jet Express (free to MS Dynamics GP customers)
 - [GL Function](#) 5 min
 - [Building a financial statement](#) 4 min
- [Jet Essentials](#) (Automated report delivery with scheduling)
- [Jet Enterprise](#) (80 pre-built reports, 7 customizable cubes, data warehouse, Jet Mobile)
- Rapid deployment
- Why would Microsoft make this announcement?
- What might this mean for my Dynamics MR strategy?

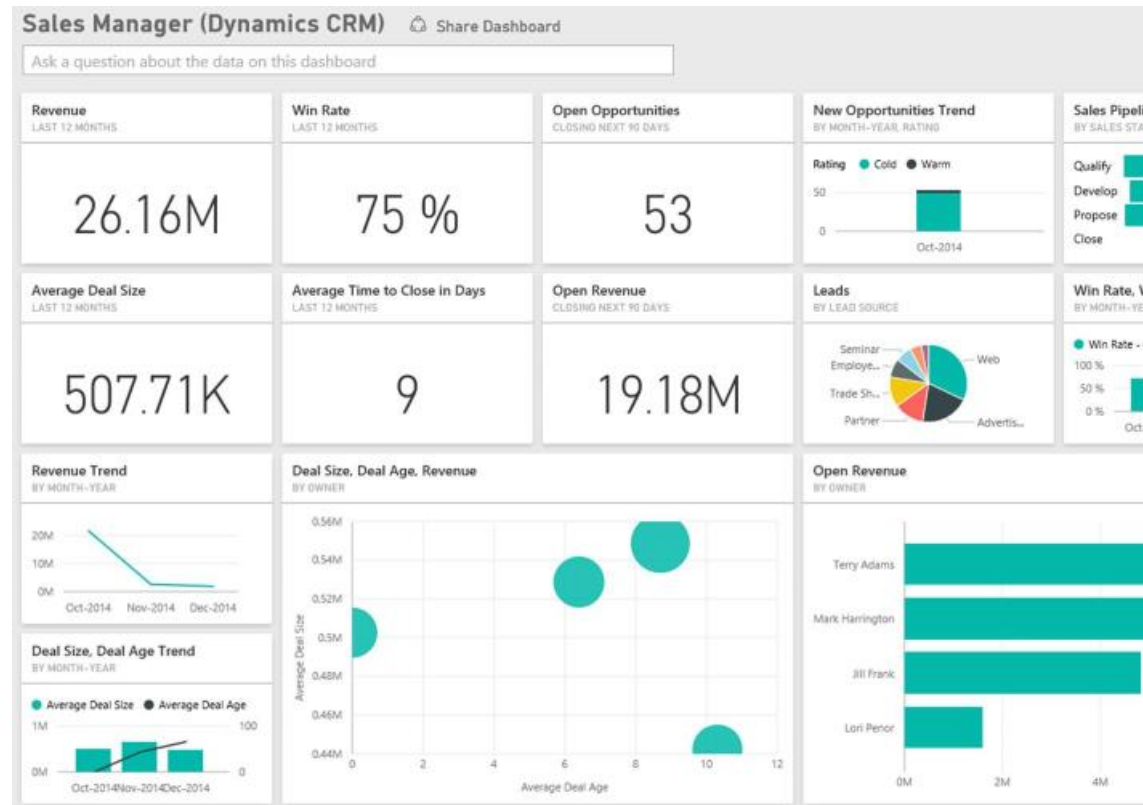
Business Intelligence

- What is BI
- Microsoft BI Building blocks
- Dynamics GP BI
- *Dynamics CRM BI*
- Successful BI project attributes

Dynamics CRM

- Paginated Reports
 - SSRS
 - Views
- Interactive
 - Advanced Finds
 - Dashboards
 - Excel Power Query
 - Power BI Desktop (Content pack)
 - Jet Reports
- Mobile
 - Dashboards
 - Power BI Mobile / Datazen
 - Jet Reports Mobile
- Analytical
 - Excel Pivot Tables
 - SQL Analysis Services

Power BI CRM Content Pack



Business Intelligence

- What is BI
- Microsoft BI Building blocks
- Dynamics GP BI
- Dynamics CRM BI
- *Successful BI project attributes*

Successful BI Projects

- Correct timing in ERP implementation life cycle
- Cultural need
 - Manage by information
 - Proactive vs. Reactive
- Strong understanding of Data Modeling
- Strong training in BI visioning tools
 - Excel or bi360
- Evolutionary approach
- Organizational awareness of skill sets / roles

10 keys to BI success

- Ensure a C-Level Sponsor (Not CIO)
- Create common business language
 - Choose 10-20 KPIs to start and create standards and governance to match
- Properly assess the current state (data quality, systems, resources, etc)
- Create a storage plan (physical or virtual)
- Understand the user Need (Strategic, Tactical, Operational)
- Decide to Buy or Build your analytical data model
- Consider all BI components
- Choose a systems integrator (\$5-\$7 per \$1 of software)
- Think “actionable” and “baby steps” – Evolve
- Start with low lying fruit (Simple, large return)

Agenda

- 11:00 Welcome
- 11:10 What is BI
- 11:50 Lunch
- 12:00 Round Tables
- 12:45 Break
- 1:00 GP 2016
- 1:30 BPO
- 2:00 Break
- 2:15 Going beyond with CRM
- 3:15 Wrap up / Draws